

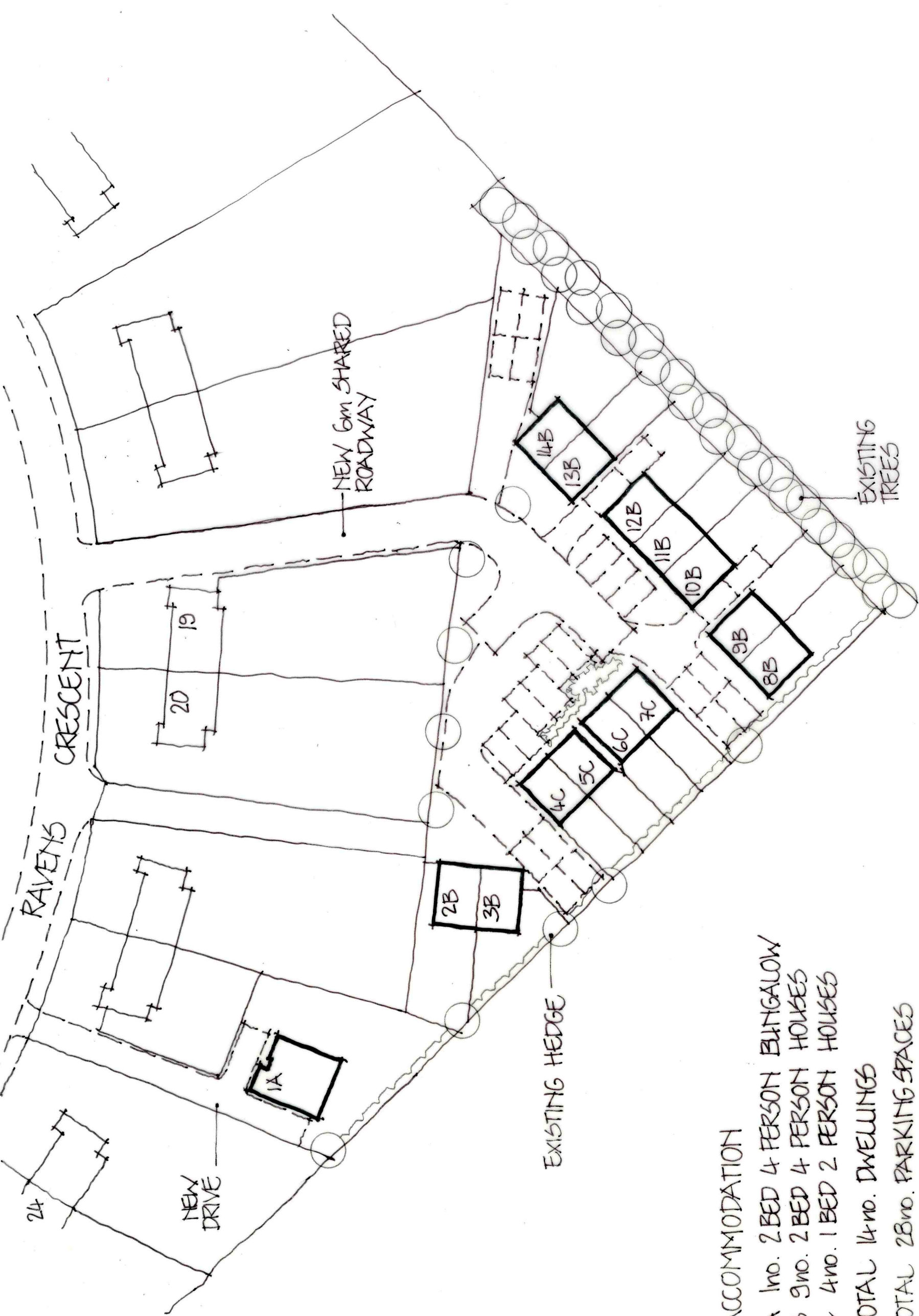
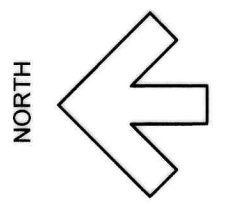
Date: March 2014
Revision: 14 1391 sk1

Scale: 1 : 500 @A3

Client: Uttlesford District Council
Project: Proposed Development, Ravens Crescent, Felsted

The Studio
Drinkstone Office Park
Bury St Edmunds
Kempton Way
Suffolk IP32 7AR
Tel: 01284 756166
Fax: 01284 702615

Rees
Pryer
ARCHITECTS



- ACCOMMODATION
- A 1no. 2BED 4 PERSON BUNGALOW
 - B 2no. 2BED 4 PERSON HOUSES
 - C 4no. 1BED 2 PERSON HOUSES
- TOTAL 14no. DWELLINGS
- TOTAL 28no. PARKING SPACES